

Epidemiology of transient ischemic attack in the Normandy stroke population-based study

How did switching from a time-based to tissue-based definition of TIA affect TIA incidence and recurrence risk in a population primarily investigated by MRI?

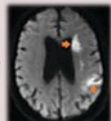
Methods



Normandy stroke registry (2017–2021)



Symptoms < 24 h
Time-based TIA



Tissue-based TIA



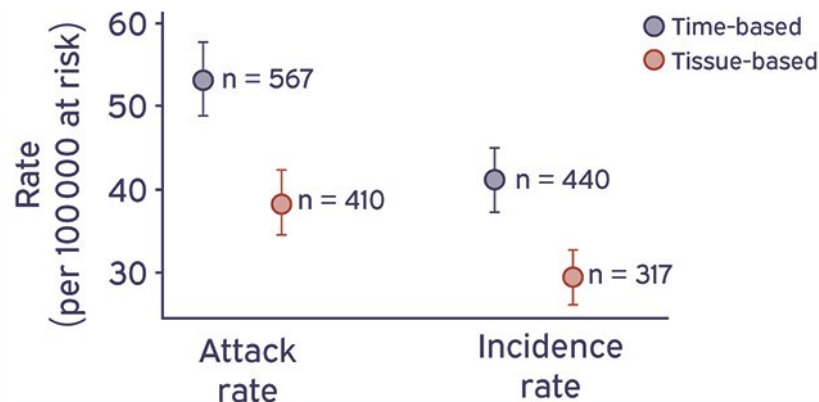
Incidence, attack rates
90-day stroke rate

Results

90-day stroke risk



Comparison of tissue-based and time-based definitions of TIA



Conclusion

The use of the tissue-based definition of TIA resulted in a $\approx 27.5\%$ reduction in incidence as compared to the time-based definition.

The 90-day stroke rate was similar in both groups.